



BRAINWAVE

SUPPORTING CHILDREN WITH
NEUROLOGICAL CONDITIONS

YOU CAN MAKE A DIFFERENCE

BRAINWAVE ANNUAL REPORT
2017/18

brainwave.org.au





BRAINWAVE

SUPPORTING CHILDREN WITH
NEUROLOGICAL CONDITIONS

CONTENTS

- 3 Our Mission, Values, Vision
- 5 Chairman's Report
- 6 From The Founder
- 7 From the Brainwave Team
- 8 Brainwave Family Programs
- 12 Sam's Story
- 13 How You Can Help
- 14 Our Supporters
- 16 Brainwave Events
- 18 Evie's Story
- 20 Our Board
- 23 Financial Results
- 24 Donors, Patrons & Ambassadors



Brainwave would like to acknowledge the generous support it receives from Blueprint for all its printing throughout the year. Blueprint is a long-term partner and we couldn't do the work we do without them.

OUR MISSION

Our mission is to provide practical assistance and emotional support to children with neurological conditions as well as their families and carers to positively impact their quality of life.

OUR VALUES

Core values are the guiding principles that dictate the behaviour and action of Brainwave, these values are at the heart of everything we do. **Brainwave's values are:**

Be respectful: We will treat all people with dignity, fairness, compassion and respect.

Be caring: We will ensure that we approach people and issues with sensitivity, confidentiality and care.

Be inclusive: We are welcoming to all and offer assistance without prejudice.

Be positive: We have a positive and uplifting approach and seek to engender a sense of hope and purpose in all we meet.

Be community minded: We will foster cooperative relationships in the community to deliver on our promise to Brainwave families.

OUR VISION

Our vision is to reduce the impact of paediatric neurological conditions on children and their families

I CANNOT TELL YOU HOW MUCH THIS FUNDING HAS MEANT TO THE FAMILY....

BRAINWAVE IS AN AMAZING ORGANISATION AND IN THIS CASE HAS BEEN REALLY TIMELY SUPPORT



BRAINWAVE
SUPPORTING CHILDREN WITH
NEUROLOGICAL CONDITIONS

HOW WONDERFUL
IT IS THAT NOBODY
NEED WAIT A SINGLE
MOMENT BEFORE
STARTING TO IMPROVE
THE WORLD.
ANNE FRANK



FROM THE CHAIRMAN TRENT BROOKS

It has been a hectic but very successful year for Brainwave. We have also experienced a lot of change throughout the year. Our team has worked tirelessly to deliver a great range of camps, holiday programs, family events and Christmas parties for our families. They have also delivered several successful fundraising events. We are continually reminded of the positive impact that our activities and donations have on the lives of our children and families. It inspires us to expand our reach and range of services to families in need.

None of our success would be possible without the huge support that we receive from our sponsors, foundations and individual donors. Once again, this year we have received wonderful support from our major sponsors, Mercedes Benz, Westpac, QBE, Ferrero, Channel 7 and Burberry. Similarly, we have received great support from philanthropic trusts and foundations, including Chain Reaction, Barr Foundation, Turi Trust, Igniting Change, Allens Lawyers, The Humanity Foundation and others.

We are mindful of the competing demand for these funds and appreciate the support that we receive from these organisations. We have also had assistance and donations from hundreds of private individuals and companies including the Mercedes Benz dealer network across Australia. Please be assured that we never take this support for granted and ensure that we spend every dollar carefully and to maximum benefit of our Brainwave families.

The development of NDIS has made our role more complex but has not lessened the requests for support of therapies and specialised equipment needed by Brainwave children. Our established programs, Bear Essentials and Catch a Break have grown further over the year and are supported by hospitals and care agencies.

The large attendances at our camps and family days continually reinforces to us the importance of these outlets for families to engage with others who share the daily challenges that these disabilities and illnesses bring with them. We are constantly reminded that the real heroes in the Brainwave families are the parents, siblings and wider support teams that care for these important children.

The daily requests for assistance large or small that we receive at the Brainwave office always exceed our capability. These may be essential specialised suction feeding equipment, mobility aids, special tutoring services, therapies, or as small as an iPad to assist with learning. Each request is vitally important to the recipient and we must find a way to expand our reach and satisfy more of these needs in the future. This will only happen by increasing our revenue base and your increased support.

Thank you to the Brainwave team, volunteers and the Board of Directors for delivering another successful year.

**BRAINWAVE**SUPPORTING CHILDREN WITH
NEUROLOGICAL CONDITIONS

FROM THE FOUNDER

JOSEPHINE NICHOLLS AM

Reviewing the end of the 2018 financial year, reminds me that we are heading towards our 25th year and that is cause for reflection.

That small boy who was diagnosed with a brain tumour is now 30 and is running his own business along with his business partner. His brother, who was celebrating his 4th birthday at the time of the operation is now 28 and about to embark on his own business. Little did I know how a sudden change in circumstances could totally alter the course of my life and that of my family.

The outcome for me was the establishment of Brainwave, a vision I had to try to make some positive change for other families and their children and the results now speak for themselves. Despite no paid staff in the first eight years of Brainwave's life, it continued to grow and ensured every cent raised was donated to support better outcomes for families in the paediatric neuroscience departments. This was only able to occur due to a very active volunteer fundraising committee, who worked tirelessly without recognition.

During the years we have been lucky to have an active board who have secured some amazing sponsors, ensuring our growth and enabling Brainwave to expand its programmes. That list of sponsors is recognised in the Chairman's report and I would personally like to thank them all.

The development of the Care Programmes was a positive step in ensuring siblings were included in the change of dynamics that families undergo when a child is diagnosed with a brain illness. It is heart warming to see children meeting at camp and forming bonds that help them adjust to their sudden change in circumstances and in understanding they are not isolated.

As with any small business or charity Brainwave has gone through several changes but what has never altered is our vision, mission and values to the families we support, the real hero's in the story of Brainwave.

Twenty four years on, children are still diagnosed with devastating brain illnesses, requiring specialised mobility aids, feeding aids, sleeping aids, learning aids and more than anything a support network that understands what their lives look like 24/7, which is why we need your continued support.

Brainwave commenced by identifying a gap in the then Aids & Equipment Programme and to this day even with the NDIS that gap still exists. Children need their specialised equipment immediately in order to leave hospital and return home, where even statistics tell us children recover at a much faster rate, physically and emotionally. Let's continue to ensure we support the children and their families through their journey.

Thank you to the board, the staff, the sponsors and the volunteers for keeping this vision alive.

FROM THE TEAM

BRAINWAVE AUSTRALIA

The year 2017/2018 has been an exciting but challenging year for the Brainwave team. We experienced a lot of change, with new faces on the team and a changing landscape with the rollout of NDIS. We have also worked hard to meet the increasing needs of our growing register of children and families. Our small team of 6 staff have achieved a great deal during the year, including:

VIC FAMILY EVENTS

- Kids & Sibs – School Holiday Event at Kids in Motion
14 July 2017 – **50 attendees**
- Camp Brainwave - Mount Eliza
15-17 September 2017
83 attendees
- Luna Park Christmas Party
17 December 2017
464 attendees
- Family Day – The Big Goose, Moorooduc, 18 March 2018
193 attendees

NSW FAMILY EVENTS

- Camp Brainwave – Point Wolstoncroft
25-27 August 2017
52 attendees
- Family Day – Featherdale Wildlife Park
22 October 2017
170 attendees
- Luna Park Christmas Party
25 November 2017
256 attendees

SYDNEY GALA
192 ATTENDEES
MELBOURNE GALA
421 ATTENDEES
MELBOURNE LUNCHEON
154 ATTENDEES

With the wonderful support of our corporate sponsors, philanthropic organizations and many donors, we have been able to distribute \$101,772 of equipment and therapies to our children.

While this is a good result, demand in this area always exceeds our financial capacity and we have to make difficult decisions of who receives our assistance. That is why we continue to work to grow our revenue base. The equipment that is distributed is often life changing and can often mean the difference between a child who is able to join their family at home or forced to remain in hospital. So, we must grow this program.

The best part of our job is meeting and interacting with our families, particularly at our camps and family days.

They continue to inspire us. The care shown by parents and siblings is wonderful, and an example to us. Similarly, we get the opportunity to work with our volunteers, who help us to run these events. They are always great fun to work with and make the events viable.

We receive a lot of wonderful letters from families, some of which are printed in this report. This feedback is often very moving and reinforces what an important role that Brainwave has.

We particularly receive a lot of letters of thanks from recipients of the Bear essentials program. It is amazing how much joy and comfort this little bear brings. As a result, we will expand this program into other states in 2019.

Again, a huge Thank You to our sponsors and donors. Your financial support is making a positive difference to the lives of children and families in need.

We honestly were nervous about how we would cope away from the comforts and structure of home. We were worried how Olivia, our 14 year old daughter with severe autism, epilepsy and sensory disorder would handle it! Our 7 year old was worried he would have no friends and everyone would be like his sister! Well it turned out to be an incredible weekend for all the important reasons!!!



BRAINWAVE

SUPPORTING CHILDREN WITH
NEUROLOGICAL CONDITIONS

MAKING A DIFFERENCE FAMILY EVENTS PROGRAM

Social isolation is a major factor for many of the families Brainwave supports. Often their situation is forced upon them overnight, their lives are changed forever and in many cases 24/7 care is required for their child in the home.

Brainwave runs fun, free, all ability events for children and their families to break social isolation and to promote social engagement with other families in the same situation. These events enable families to share their day to day challenges and empower them to build a supportive community network.

After 16 years!! We have our FIRST Santa Photo...

Despite the preparations I've done in the past. Whenever our son sees Santa in the mall he runs away and covers his ears and even eyes until he trips. So I haven't braved it again until today.

We did not force him. We encouraged him and gave the assurance that we were there as his backups. After we got through it and met Santa, he shouted "WE DID IT" I am so proud of you my boy.

We Sleighed it. We are forever grateful Brainwave team.

brainwave.org.au



**WE CAN'T HELP
EVERYONE, BUT EVERY-
ONE CAN HELP SOMEONE.**
RONALD REAGAN

FAMILY DAYS

Brainwave's Family Day events provide a great opportunity for children and families experiencing the same challenges, to come together for direct support.

Brainwave's fully inclusive family events promote social networks and lifelong friendships. Family Days are held at a variety of interesting locations such as zoos, animal parks and farms, giving families a fun day out, breaking social isolation and providing some welcome respite from daily challenges.

CAMP BRAINWAVE

Camp Brainwave is a two and a half day residential camp for families who have a child with a neurological condition. At Camp Brainwave NSW and VIC, family, and not the child's condition, is the focus of the weekend.

Developed as part of Brainwave's Care Programs, Camp Brainwave aims to provide a unique opportunity for families to enjoy the company of other families in a supportive and non-judgmental environment, building vital support networks that last well beyond the weekend. Families enjoy a fully catered weekend away, filled with fun, games and activities for all ages and abilities. Camp Brainwave NSW and VIC are inclusive of the whole family, including siblings.

KIDS AND SIBS

Kids and Sibs is a hugely popular school holiday program held in VIC. This unique event provides an opportunity for inclusive play between Brainwave children and their siblings.

It is an adventure-filled physical activity program catering to all abilities, in a safe, active and friendly environment, at Kids in Motion in Port Melbourne. Bouncing, climbing, swinging, challenges and all-round fun and games are the order of the day, with siblings inspiring and encouraging each other as well as making important new connections and friendships with children in similar situations to their own.

BRAINWAVE CHRISTMAS PARTIES

A highlight on the annual Brainwave calendar, our Christmas parties provide a wonderful opportunity for Brainwave families and friends in NSW and VIC to reunite and connect whilst enjoying much festive fun.

Traditionally held at Luna Park, Brainwave's Christmas parties are a special day out for families, where children delight in meeting Santa, face painting, meeting Christmas characters, writing letters to Santa, taking fun photos and making their way to their favourite rides. Brainwave's Family Christmas parties bring families together to share in the magic of Christmas.



BRAINWAVE

SUPPORTING CHILDREN WITH
NEUROLOGICAL CONDITIONS



**KINDNESS AND
A GENEROUS SPIRIT
GO A LONG WAY. AND
A SENSE OF HUMOR.
IT'S LIKE MEDICINE -
VERY HEALING.**
MAX IRONS

brainwave.org.au

MAKING A DIFFERENCE CARE PROGRAM

We were admitted to Cockatoo Ward without at all being prepared for this eventuality and the kind nursing staff gave Audrey and I one of your Bear Essentials Packs. Having never even taken one of our children to emergency before this was a whole new world for us and we were woefully prepared. Receiving your pack was extremely touching and thoughtful, not to mention practical! I was very pleased to be able to brush my teeth the next morning and in all I was at RCH for 24 hours before being able to head home and pick up my own toiletries.

EQUIPMENT AND THERAPIES PROGRAM

This program supports children on their road to recovery or improves their quality of life. In many cases, children are unable to be discharged from hospital until they have the necessary support in place at home.

Brainwave receives a constant stream of requests for assistance. These requests come directly from families registered with Brainwave and via social workers within paediatric hospitals and units.

CATCH - A - BREAK PROGRAM

Hospital staff have identified a strong need to financially support many families who are impacted by long-term hospital stays. The ongoing cost of petrol, accommodation, hospital car parking fees and meals whilst their child is an in-patient creates considerable financial strain for families. Car parking costs range from \$10 to \$25 per visit and there is limited subsidised accommodation available.

Brainwave provides vouchers to subsidise costs for families and pays for emergency accommodation for families traveling from outside of metropolitan Melbourne to care for their child.

Brainwave works in close consultation with social workers at the hospitals to ensure that this program assists families who are verified as financially disadvantaged and in need of additional support.

BEAR ESSENTIALS PROGRAM

An emergency admission onto the paediatric neurology ward throws a family into a panic and the ability to think rationally is often secondary to the paramount concern for the sick child.

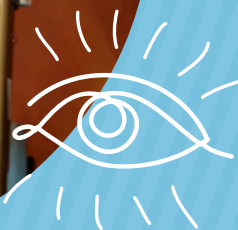
Basic hygiene needs such as a toothbrush and toothpaste, soap and necessities such as a notebook to record information and a pen are just some of the items that can be overlooked during this crisis. The Brainwave Bear Essentials Pack addresses the immediate needs of families providing a level of comfort and basic hygiene needs to help ease the trauma of families when a child is suddenly admitted to hospital.





BRAINWAVE
SUPPORTING CHILDREN WITH
NEUROLOGICAL CONDITIONS

HELLO
MY NAME IS
ARISSA
I AM THREE



Meet lovely Arissa. At 3 years of age, Arissa loves her unicorn toy and has the most fun when she is playing with her siblings and listening to music!

Arissa has Ataxic Cerebral Palsy and difficulty with moving and controlling her body. Extremely delayed in all areas of her development, Arissa needs significant assistance and support with all activities of daily living.

‘THE SPLINT HAS MADE SUCH A POSITIVE DIFFERENCE, AND HAS ENABLED ARISSA TO HIGH KNEEL AND MOVE AROUND THE COUCH, AND PRACTICE WALKING WITH HER WALKING FRAME WHICH SHE WAS PREVIOUSLY UNABLE TO DO.’

Arissa’s family have applied to Brainwave for a Second Skin Lateral Stability Splint to assist with controlling her ataxia and increasing her stability in all positions. Anne-Marie, Arissa’s therapist says “The splint has made such a positive difference, and has enabled Arissa to high kneel and move around the couch, and practice walking with her walking frame which she was previously unable to do”

Arissa and her family would like to thank Brainwave and their sponsors for their wonderful support and generosity “...supporting children and their families at an extremely difficult time”.

Here is a photo of Arissa wearing her Stability Splint and practicing walking with her frame.

HOW YOU CAN HELP

WE WOULD LOVE YOU TO GET INVOLVED AND ASSIST US ON OUR JOURNEY. THERE ARE A NUMBER OF WAYS YOU CAN HELP BRAINWAVE TO CONTINUE TO PROVIDE SUPPORT TO FAMILIES IN NEED.

YOU CAN MAKE A DIFFERENCE

WORKPLACE GIVING

A small, very effective way that you can contribute to the Brainwave journey is by automatic deductions from your payroll that will automatically flow to our programs. The equivalent of a weekly cup of coffee will provide a valuable piece of equipment for a Brainwave child.

BECOME A BRAINWAVE VOLUNTEER

There are many opportunities for a volunteer to contribute, including assisting at family and fundraising events, working at Brainwave office or joining one of our Volunteer Committees in Melbourne or Sydney.

FUNDRAISE FOR BRAINWAVE

There is no end to the ways that you can engage your friends, workplace, school or local community. You might like to hold your own event or participate in a challenge event. You might engage your workplace through a morning tea, BBQ or team event. This will not only assist Brainwave but raise awareness among your work colleagues of the challenges confronting Brainwave families.

PURCHASE A PIECE OF EQUIPMENT OR THERAPY SESSIONS

Many necessary items of equipment, therapy sessions, tutoring, educational aids are out of the financial reach of our families and are not covered by government programs. You can make a huge change to the quality of life of a Brainwave child and their family.

REGULAR DONATIONS

Any financial support will make a real difference to the lives of the children and families Brainwave supports. Donations of any size will make a positive difference to a little life. It’s easy. Just log on to our website. www.brainwave.org.au

SPONSOR A FAMILY EVENT

Our family camps and days are rewarding experiences for our volunteers, as well as our families. Sponsoring one of these events, with naming rights, will provide a lasting impact and great memories of how you have made a difference.

The events also provide a great opportunity for your friends, family, staff to contribute.

CORPORATE PARTNERSHIP

We’ve demonstrated our commitment to developing strong relationships with the corporate sector over the last 24 years and we’re always on the lookout for new corporate partners who want to make a difference. We are keen to explore all options to make this work, together.

Our daughter was admitted to the Cockatoo ward today at RCH as she’s had a day of rolling seizures. We were greeted by a beautiful gift from Brainwave, a lovely blanket and teddy for her and some lovely tea for me.

Thank you. This was so thoughtful and made our day.



BRAINWAVE
SUPPORTING CHILDREN WITH
NEUROLOGICAL CONDITIONS

OUR CORPORATE PARTNERS AND SPONSORS

Once more our Corporate partners and sponsors have dug deep to support Brainwave's work. This has come through sponsorship of programs, donations, direct purchase of equipment and programs targeting a specific child. These organizations have really made a difference to the lives of many children and their families.

PRINCIPAL PARTNER MERCEDES BENZ AUSTRALIA

The Mercedes organization has been the principal partner of Brainwave for the last 6 years. As well as a generous partnership grant from the corporate centre, Mercedes dealers and staff have all contributed generously to our families.

This support has come from several areas:

- Dealer golf days, where Brainwave has received generous donations
- Volunteers for events
- Proceeds of sale of Mercedes Benz merchandise at Support Office
- Attendance at fundraising galas and other events
- Donations of auction items for galas

We especially thank Mercedes-Benz dealerships throughout Victoria and New South Wales for their generous support. They have supported us with donations, golf days and participation at our events. Through these activities, Mercedes-Benz dealerships have contributed \$190,000 for the financial year. Thank you Mercedes-Benz.

SUPPORTING PARTNER QBE AND THE QBE FOUNDATION

QBE has again supported Brainwave during 2017/2018. This has included:

- Proceeds from QBE photographic exhibition
- Brainwave families at Sydney Swans gameday
- QBE Foundation support
- Staff fundraising with QBE matching donations

**NO ACT OF KINDNESS,
NO MATTER HOW SMALL,
IS EVER WASTED.**
AESOP



AND A HUGE THANK YOU TO
THE MANY ORGANIZATIONS AND
INDIVIDUALS WHO GAVE GENEROUSLY
OF THEIR TIME AND THEIR
FINANCIAL ASSISTANCE

**THE BEST AND MOST BEAUTIFUL THINGS IN THE
WORLD CANNOT BE SEEN OR EVEN TOUCHED -
THEY MUST BE FELT WITH THE HEART.**
HELEN KELLER

THE SEVEN NETWORK

Generously supply talent for our Gala events and media opportunities to raise awareness

SMARTWAYS

Generously sponsor contents of the Bear Essential Packs

- Smartways staff send Brainwave Bear Essential Packs locally to hospitals in Victoria and interstate to hospitals in New South Wales

WESTPAC

- Provided financial support of Bear Essentials Program
- Matched staff fundraising and donations
- Provided volunteers to work at events

GUARDIAN MEDICAL

- Funded the Kids and Sibs Holiday Program
- Provided generous donations throughout the year
- Participated in fundraising and family events.

FERRERO

- Fundraised through staff Christmas and Easter product sales
- Sponsored Sydney Gala
- Held a family day at Taronga Zoo
- Provided volunteers to work at events
- Provided product for family events and auction items.

VIRGIN AUSTRALIA

- Provided Brainwave with an annual travel bank to facilitate interstate travel to liaise with families, attend meetings at key hospitals and to enable staff to attend our New South Wales family events
- Generously provide travel vouchers for auction prizes at our two Gala events

BURBERRY

- Staff have volunteered to assist at events
- Conducted a Christmas appeal with staff
- Provided auction items for Galas



QBE



**The QBE
Foundation**



SMARTWAYS
LOGISTICS FOR LIFE

Westpac



FERRERO



BURBERRY



BRAINWAVE

SUPPORTING CHILDREN WITH
NEUROLOGICAL CONDITIONS

OUR EVENTS

YOUR ORDINARY
ACTS OF LOVE AND
HOPE POINT TO THE
EXTRAORDINARY
PROMISE THAT EVERY
HUMAN LIFE IS OF
INESTIMABLE VALUE
DESMOND TUTU

767 PEOPLE
ATTENDED
OUR FUNDRAISING
EVENTS IN VICTORIA
AND NEW SOUTH
WALES

1,268 PEOPLE
ATTENDED
OUR FAMILY EVENTS
HELD IN VICTORIA
AND NEW SOUTH
WALES



BRAINWAVE

SUPPORTING CHILDREN WITH
NEUROLOGICAL CONDITIONS

**HELLO
MY NAME
IS JOY**
I AM SIX



Meet our friend Joy, our very social 3 year old, who loves to dress up, read books and play outside. Joy has an older brother and a little sister, who she loves hanging out with, and being where the action is.

Joy was diagnosed with Cerebral Palsy by a neurologist before she turned two. She also has Chromosome 4q Deletion Syndrome - a rare chromosomal disorder. These, together with a range of other medical conditions require ongoing therapies to assist with developing her core strength, mobility and communication skills.

‘JOY IS NOW ABLE TO SIT INDEPENDENTLY AT THE PLAY TABLE ENABLING HER TO DRAW, DO PUZZLES AND OTHER ACTIVITIES ON HER OWN OR WITH HER SIBLINGS... WITHOUT RECEIVING FUNDING FROM BRAINWAVE, WE WOULD NOT HAVE BEEN ABLE TO PURCHASE THIS PIECE OF EQUIPMENT FOR JOY.’

Joy's family have applied to Brainwave for a Juni Chair, so that she can have suitable support during mealtimes, table top play time and when she is feeling fatigued. Rachel, Joy's mum says "Joy is now able to sit independently at the play table enabling her to draw, do puzzles and other activities on her own or with her siblings. As her mother I am confident that Joy is safe in her Juni chair which allows me more freedom when Joy is having her play time. Without receiving the funding from Brainwave we would not have been able to purchase this piece of equipment for Joy"

Joy and her family would like to thank Brainwave and their sponsors for their wonderful support and generosity.

Here is a photo of Joy enjoying her Juni Chair

NSW FAMILY EVENTS

52 **130** **256**
ATTENDEES ATTENDEES ATTENDEES

Camp
Brainwave –
Point
Wolstoncroft

Family Day –
Featherdale
Wildlife Park

Luna Park
Christmas Party

VIC FAMILY EVENTS

50 **83** **464** **193**
ATTENDEES ATTENDEES ATTENDEES ATTENDEES

Kids+Sibs –
School Holiday
Event at Kids
in Motion

Camp
Brainwave
Mount Eliza

Luna Park
Christmas
Party

Family Day
The Big Goose,
Moorooduc

45

equipment and therapy applications were funded in 2017/18. These included ipads, suction feeding units, second skin suit, seizure monitoring system, bath chairs, walking frame, calming blanket and home therapy sessions.



**‘Luke Bear’
BEAR
ESSENTIAL
PACKS**

The Royal
Children's Hospital
192 bags

Monash
Children's Hospital
24 bags

The Children's
Hospital at
Westmead
56 bags

Sydney
Children's Hospital
12 bags



BRAINWAVE
SUPPORTING CHILDREN WITH
NEUROLOGICAL CONDITIONS

THE MEASURE
OF WHO WE ARE
IS WHAT WE DO
WITH WHAT
WE HAVE
VINCE LOMBARDI

INTRODUCING OUR BOARD



TRENT BROOKS **CHAIRMAN**

Managing Director, Guardian Medical Pty Ltd

Trent Brooks is Managing Director and founding shareholder of Guardian Medical Pty Ltd with 20 years' experience in the management of a medical group of companies comprising Medical Centres, Dental Practice, and Property Division. Trent also consults to the healthcare industry on the implementation of management systems to medical practitioners and operators as well as consulting on the establishment or expansion of medical facilities and groups.



DAVID BLACKLEY

Retired Chairman of Clemenger BBDO, Melbourne

David was with the Clemenger Group of marketing communications companies for 36 years, and was a member of the Worldwide Creative Board of BBDO New York, representing BBDO's interests throughout Australia, New Zealand and Asia on that Board. David has been involved with Brainwave since its inception in 1994 and joined the Board in 2008.



PATRICIA COLLETT **QAM**

Consultant, CCI

Patricia has spent most of her career in the NGO sector and held the position of Executive Director of the United Nations Association of Australia, Victoria for 17 years until her resignation 18 months ago. Prior to that time Patricia was a consultant to CEDA, the Committee for Economic Development of Australia.

Patricia has also held numerous voluntary positions during her career including as Vice President and then President of Alzheimer's Australia, Victoria for a period of ten years and also as the inaugural Vice Chair of the Alzheimer Australia Research Foundation, playing a significant role in the development, from inception, of both organizations, in Victoria and Nationally. She is an honorary life member of the Association. Patricia has a passionate interest and proven skills in developing the potential of NGO's by engaging with stakeholders at all levels of community, business and government.



PAUL GORDON

Principal and Head of the Healthcare Practice, Aon Hewitt, Pacific

Paul joined Aon Hewitt in 2012 with extensive experience across banking, finance and consulting with corporations such as Deloitte, Lend Lease and St George Bank. Paul's role at Aon Hewitt is to work with major clients in order to bring them the best of Aon's insights and services. Paul is an expert at examining issues and providing world class thought leadership and solutions. He is a published author and highly regarded presenter.



BERNIE BICKNELL

Partner NEM Australasia Advisory firm

Bernie Bicknell is an experienced Finance professional, having held senior management roles in both Australia and internationally. Bernie currently works as a consultant with NEM Australasia. He was previously CFO at the Godfreys Group and CEO and CFO of Mitre 10, and CFO for ICI Paints in New Zealand and North America. Bernie was also previously a Director and Chair of The Lighthouse Foundation, a not for profit organization working with homeless and at-risk young people. He is a Certified Practising Accountant (CPA) and a member/graduate of the Australian Institute of Company Directors (AICD).



KAREN PASSEY

Karen Passey comes to Brainwave with a strong working background in the not-for-profit sector, having been a CEO for close to 20 years, a role which saw her manage a broad range of business aspects from governance, financial accountability, human resources and strategic planning. With a background in the health sector and local government she has a sound understanding of the needs of our clients and a desire to add value to the work of Brainwave, to ensure its long-term viability and more importantly, availability, to the families that need the organization's support, now and into the future.



NEIL KEARNEY

Chairman, Huon Aquaculture Group Ltd

Neil is Chairman of ASX listed salmon farmer and processor Huon Aquaculture Group Ltd, and of privately owned FGB Natural Products Pty Ltd, a manufacturer of natural eucalyptus, tea tree and lavender based products

Neil Kearney has senior executive experience in the food and agribusiness industries within Australia, New Zealand, Asia and Europe; across a range of functions, including Finance, Marketing, Business Development, Strategy, and International Trading. His career included working for; Goodman Fielder, Warrnambool Cheese & Butter, National Foods, Nestle, Pacific Brands Food Group, Plumrose and Fosters.



DIANNE RICHARDSON

Managing Director, OMD Melbourne

Dianne has held many senior roles in the Managing Director, OMD Melbourne

Dianne is held many senior roles in the advertising and marketing industry, including Executive Vice President, Chief Strategy Officer at Universal McCann in New York prior to moving back to Melbourne. With 20+ years' experience across agency and client side her experience covers multiple categories including, Telco, FMCG, Retail, Automotive, Government, Finance and Insurance. Dianne brings a wealth of knowledge and capability across multiple disciplines including strategy, research, content, digital, data and analytics. She is highly regarded having been recognised in AdNews's "40 under 40" and gained the title of B&T's "Women in media" award in 2014.



JOHN PAUL WHITBREAD

Director

John Paul is a vastly experienced Executive Director and CEO with more than 25 years as an insurance industry leader. He has particular interest in those that use their success to try to solve social problems or effect social change. Having successfully sold the family business to a publicly listed company, John Paul now acts as a mentor to other commercial entities. He is a Fellow of the Institute of Company Directors, a Fellow of the Australian and New Zealand Institute of Insurance and Finance, and is on the Boards of several organizations, including St. Kevin's College Foundation and St. Kevin's Old Boys Football Club. John Paul has a strong sense of social justice and, in his philanthropic work, supports a variety of indigenous and education – based charities.



BRAINWAVE
SUPPORTING CHILDREN WITH
NEUROLOGICAL CONDITIONS

**A HERO IS
SOMEONE WHO HAS
GIVEN HIS OR HER LIFE
TO SOMETHING BIGGER
THAN ONESELF.**
JOSEPH CAMPBELL

ADDING IT ALL UP



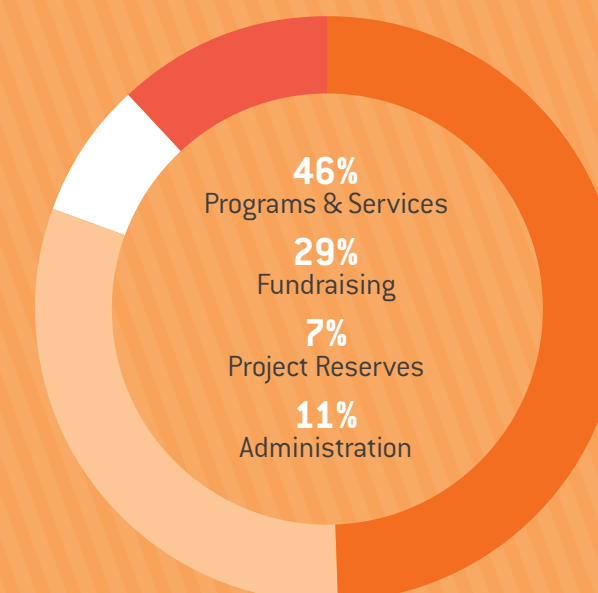
Each year, Brainwave prepares a full set of accounts which are independently audited by BDO, who are located at Level 18, 727 Collins Street, Melbourne, Victoria and lodged with the Australian Securities and Investments Commission. Our statutory accounts are available on request from the Brainwave office.

SUMMARY OF RESULTS FOR YEAR ENDED 30 JUNE 2018

Total revenue	\$1,099,571
Fundraising expenses	\$265,000
Program and service expenditure	\$414,000

Brainwave's strong financial position for 2017/18 resulted in **\$214,596** being committed to recipient funding, compared to **\$235,852** for the previous year. Program and service expenses relate to the cost of delivery of our support services to children and includes equipment and therapies, hospital liaison and family care program activities.

ALLOCATION OF FUNDS RAISED 2017-2018



It was a pleasure to meet such amazing families, as well as the lovely staff and volunteers. They were all so kind!!!



BRAINWAVE

SUPPORTING CHILDREN WITH
NEUROLOGICAL CONDITIONS

PATRONS

Shawn Cosgrove

George Gregan AM

Michael Klim OAM

Sir Gustav Nossal AC, CBE

AMBASSADORS

Jason Hodges

Lindy Rama-Ellis

BRAINWAVE AUSTRALIA

228 St Kilda Road,
St Kilda VIC 3182

National: 1300 766 819

Tel: 03 9536 5600

Email: admin@brainwave.org.au

 facebook.com/BrainwaveAustralia

 [@brainwaveaus](https://twitter.com/brainwaveaus)

 [@brainwaveaus](https://www.instagram.com/brainwaveaus)

brainwave.org.au

PHILANTHROPIC TRUSTS

With generous support from a range of philanthropic trusts and foundations, Brainwave has been able to support children in need through the delivery of practical support programs across Victoria and New South Wales.

The donors for activities in 2017/18 included:

- Allens Charity Committee
- Bank of Melbourne Neighbourhood Fund
- Barr Family Foundation
- Boncal Family Foundation
- Chain Reaction
- Commonwealth Bank
Grassroots Community Program
- Igniting Change
- The Humanity Foundation
- Turi Trust
- Westpac Bank
- William Angliss Charitable Fund

Principal Partner



Major Supporting Partner

 **The QBE
Foundation**