



Brainwave **ANNUAL REPORT** 2018|19

25 YEARS
of supporting families



BRAINWAVE
SUPPORTING CHILDREN WITH
NEUROLOGICAL CONDITIONS

Supporting families since 1994

contents

- 4 Our Vision, Mission & Values
- 5 Joint Message From
Our CEO & Chairman
- 7 Founder's Reflections
- 8 Family Programs
- 10 Supporting our Families
- 13 Meet Liam
- 14 Our Events
- 16 Corporate Partners, Sponsors
& Supporters
- 18 Meet Dylan
- 19 How to Get Involved
- 20 Our Board
- 23 Financial Review

25
YEARS
SUPPORTING
FAMILIES



Brainwave would like to acknowledge the generous support it receives from Blueprint for all its printing throughout the year. They are a long-term partner and we couldn't do the work we do without them.

our vision our values

Our vision is to reduce the impact of paediatric neurological conditions on children and their families.

our mission

Our mission is to provide practical assistance and emotional support to children with neurological conditions as well as their families and carers to positively impact their quality of life.

Core values are the guiding principles that dictate the behaviour and action of Brainwave, these values are at the heart of everything we do.

Brainwave's values are:

Be respectful: We will treat all people with dignity, fairness, compassion and respect.

Be caring: We will ensure that we approach people and issues with sensitivity, confidentiality and care.

Be inclusive: We are welcoming to all and offer assistance without prejudice.

Be positive: We have a positive and uplifting approach and seek to engender a sense of hope and purpose in all we meet.

Be community minded: We will foster cooperative relationships in the community to deliver on our promise to Brainwave families.

"I would like to thank the team at Brainwave for providing funding for Luca's speech therapy with Michelle our speech therapist. Around nine months ago, after another hospital admission, we were given a patient pack sponsored by Brainwave. Brainwave's assistance in funding Luca's speech therapy has been beyond our wildest expectations. Thanks to Brainwave, Luca continues to see his speech therapist and is making unbelievable progress. He has changed from a child who could barely repeat a simple "mmm" sound after five minutes of prompting, to attempting to say one and two syllable words within seconds of hearing it, including his most recent accomplishment of saying his own name as well as his sister's name."

Candice, mother of Luca - aged 6

joint ceo + chairman's MESSAGE

In 2019, Brainwave celebrated a milestone, we marked our 25th year of changing lives for the better. From the start, our commitment has been to improving the lives of children impacted by a neurological condition, and we honour our Founder, Jo Nicholls who has been instrumental in shaping Brainwave into the wonderful organisation it is today. Brainwave exists to offer flexible, dynamic support to families thereby ensuring positive outcomes for children in need.



A key achievement for us over the past financial year, has been the expansion of our hospital-based initiatives, enabling us to reach more families, through the growth of our Catch-A-Break program and provision of our Bear Essentials Packs to major paediatric hospitals across Australia. This allows us to provide financial support, emergency accommodation options and a degree of comfort to a family and their child who suddenly find themselves in a hospital environment. Going from hospital to home also has its challenges for families, with many of their children having requirements that go above and beyond the traditional funding criteria and limits. Our commitment to providing support for the transition from hospital to home is ongoing and during the year we have funded mobility equipment, aids, and therapies that assist recovery and rehabilitation.



Every child deserves the chance to do what kids do - explore, laugh, share, learn and have fun. When a family focusses all their resources on the medical needs of a child, sometimes the fun stuff is out of reach. Our family programs and activities delivered throughout the year, included family days, whole-family camps, sibling play sessions and Christmas parties. Brainwave's program of activities were extremely popular, with large attendances, highlighting the significance and value of these events as a means for families to share enjoyable experiences. The outreach of our family programs also enables families to connect and interact with others in similar situations. Building on this, so that families can share experiences and knowledge will be our focus next year. As will delivering, high-quality services to our children and their families that keeps pace with the needs of our community.

Our work ability to positively change lives is only possible through the support of our valuable partners. Put simply, we could not do the work that we do to support children and their families without the generous assistance we receive, year on year, from our supporters. There have been many join us on the Brainwave journey and through the support of our corporate partners, patrons and ambassadors, suppliers and loyal donors we have become the organisation we are today. We greatly appreciate our long-term Principal Partner, Mercedes-Benz Australia and support of the Mercedes-Benz dealer network. In addition, we are thankful for the generosity and shared purpose realised through our major sponsor Ferrero alongside our many other committed corporate partners. We would also like to extend our sincerest thanks to our community fundraisers, charitable trusts and workplace givers for their support.

Finally, as we wrap up another year, we express our gratitude for the commitment of our volunteers, staff, Board and Events Committee led by Sandy Brooks and Claire Whitbread - for their energy, time and determination to making a positive difference to the lives of our Brainwave children. For 25 years, this has been our purpose and our mission will always be to offer the best support possible to children such as Liam and Dylan whose stories are shared in this review.

DR AMY TIMOSHANKO, CEO & TRENT BROOKS, CHAIRMAN

from the founder JOSEPHINE NICHOLLS

I am so proud that in 2019 Brainwave is celebrating the 25th anniversary of its launch. Over this incredible journey the organisation has stayed true to its original vision, aiming to reduce the impact of paediatric neurological conditions on children and their families. Brainwave started as a volunteer run charity, and over the last year expanded into five states. I am delighted that in 2018/19 our range of support programs and events continue to make a profound impact on the lives of so many.



Brain tumours. Muscular dystrophy. Epilepsy. Stroke. Multiple sclerosis. Cerebral palsy. Autism spectrum disorder. Twenty-five years on, children are still being diagnosed with these and many other devastating brain illnesses. I am thrilled that Brainwave's programs in 2018/19 have grown and that we are able to reach a greater number of families across the country. The support and assistance that we offer can take many forms including allied health therapy funding or the provision of equipment such as mobility, sleeping or feeding aids. Additionally, social interaction and engagement in a safe, respectful environment and a strong network are also integral aspects of our support offerings.

Brainwave commenced to assist families and children both in the hospital environment and at home. With the identification of a gap in the then Aids & Equipment Program, Brainwave was able to ensure families received the much-needed equipment in order for their children to return home. Despite changes made by governments gaps still exist today. The families I meet with often require immediate assistance

accessing urgent equipment, vital therapies or financial support. Brainwave plays an essential role in responding quickly to crucial requests for help. I am so pleased that in 2018/19 we have been able to assist these children and their families on the journey to recovery.

Throughout the years, we have been fortunate to have committed staff, an active, passionate board and some wonderful sponsors. Alongside our sponsors, Brainwave is privileged to have the support of many generous donors and volunteers. I am grateful to these people as they are an important part of our extended Brainwave team. I would like to offer my sincerest thanks to these organisations and individuals for their generous contributions.

I am confident that with ongoing commitment, determination and vigour we can make the next 25 years even more successful than the last. Together we can have a greater impact on the lives of our inspirational Brainwave children and their families. Thank you for your continued support, our work wouldn't be possible without you.

I AM DELIGHTED THAT
IN 2018/19 OUR
RANGE OF SUPPORT
PROGRAMS AND
EVENTS CONTINUE TO
MAKE A PROFOUND
IMPACT ON THE LIVES
OF SO MANY.

25
YEARS
SUPPORTING
FAMILIES

Family Programs

In 2018/19 we expanded our programs reaching additional children and families across Australia.



BEAR ESSENTIALS PROGRAM

Brainwave's Bear Essentials program supports families by providing care packs distributed through hospitals nationally.

We are delighted to announce that in 2018/19 the Bear Essentials Program expanded to include a wider distribution in hospitals across five states. Packs were supplied to the following hospitals:

The Royal Children's Hospital, Monash Children's Hospital, The Children's Hospital at Westmead, Sydney Children's Hospital, Women's and Children's Hospital Adelaide, Perth Children's Hospital and the Royal Hobart Hospital.



EQUIPMENT & THERAPIES PROGRAM

This valuable program assists Brainwave children with their recovery by providing specialist equipment and access to allied health therapies.

In 2018/19 we provided funding for a variety of equipment and therapy applications. We are proud to have supplied a range of essential equipment to our Brainwave children, including:

- A mobile feeding device
- A lateral stability suit
- Specialised tricycles
- Bath seats/bench
- Head support collars
- Walking frames
- A car harness system
- A standing frame
- An air pressure mattress



CATCH-A-BREAK PROGRAM

Families often experience significant financial strain when faced with unexpected, ongoing costs associated with a child's long term hospital stay.

Brainwave works in consultation with hospital social workers to ensure that disadvantaged families have access to urgent financial support.

In 2018/19 Brainwave provided assistance with emergency accommodation for families traveling outside of metropolitan areas. Meal and beverage vouchers were also distributed to those in need, enabling families to 'Catch-A-Break'.



BRAINWAVE CHRISTMAS PARTIES

Our Christmas parties are a time for our communities in Victoria and New South Wales to connect, celebrate and make wonderful memories.

Held at Luna Park, Brainwave's Christmas Parties are a special day out for families. Children can participate in a range of festive activities including: a Santa meet and greet, face painting, letter writing, photo opportunities and of course, amusement park rides. Brainwave's Christmas parties bring families together to share in the magic of Christmas.



FAMILY DAYS

For many of our Brainwave families, having a child with a serious brain illness can have a big impact on the family unit.

Common everyday activities like a family trip to the supermarket, park or play centre can be out of reach, with one parent often staying at home to care for the unwell child.

This can lead to disruption of family relationships and social isolation for parents and siblings. Our social days allow families to engage in experiences together.

In addition, there are opportunities for families to meet with others in similar situations and build key support networks. In 2018/19, our families enjoyed outings to the Melbourne Zoo and Calmsley Hill City Farm.



CAMP BRAINWAVE

Camp Brainwave is a 2.5 day residential camp for families who have a child with a neurological condition.

These camps were developed as part of Brainwave's Care Program. At Camp Brainwave families enjoy an all-inclusive weekend away filled with fun, games and activities for all ages and abilities.

Families are able to connect with one another in a safe, respectful and supportive environment.



KIDS AND SIBS

Kids and Sibs is a popular Brainwave school holiday program held in Melbourne.

This unique event provides an opportunity for inclusive play between Brainwave children and their siblings.

Held at Kids in Motion in Port Melbourne, Kids and Sibs is an action-packed session where children of all abilities can bounce, climb and swing in a safe and supported space, encouraging children to develop new friendships and draw inspiration from one another.

Kids and Sibs is a hugely successful program, and a favourite for many of our Brainwave families.

Supporting our Families

"Being at Luna Park with other families allowed us to relax and enjoy the day without a care in the world...When you have a child with a degenerative neurological condition you treasure days like this. Our lives are all about making beautiful memories which is exactly what we did thanks to Brainwave."
Bianca, mother of Ace – aged 5

41

Brainwave children and their siblings attended
KIDS & SIBS – KIDS IN MOTION

71

children and their families/carers attended
CAMP BRAINWAVE – MOUNT ELIZA



75

children and their families/carers attended
CAMP BRAINWAVE – POINT WOLSTONCROFT



146

attendees enjoyed the Brainwave
FAMILY DAY – CALMSLEY HILL CITY FARM

37

people attended the
FERRERO FAMILY FUN DAY



930

BIRTHDAY CARDS
were sent to Brainwave children across Australia



205

attendees enjoyed the Brainwave
FAMILY DAY – MELBOURNE ZOO



196

people celebrated at the annual
SYDNEY LUNA PARK CHRISTMAS PARTY



430

people celebrated at the annual
MELBOURNE LUNA PARK CHRISTMAS PARTY



Meet Liam

Liam and his twin brother Oliver were both diagnosed with cerebral palsy at 18 months old. They are now 3 years old.

AT THREE YEARS OF AGE, THE BOYS SHARE A CLOSE BOND - THEY LOVE TO PLAY AND LAUGH TOGETHER.

NEITHER TWIN IS WALKING OR TALKING AS YET, HOWEVER THEY ARE UNDERTAKING EXTENSIVE PHYSIOTHERAPY, SPEECH AND OCCUPATIONAL THERAPY TO HELP THEM PROGRESS TOWARD THESE MILESTONES.

Liam was funded a Mustang walker through Brainwave. Liam loves being in his walker as it allows him to play and interact with his brothers. He enjoys exploring, kicking the ball and running around with the help of his walker. Liam also attends a group program with other children who have cerebral palsy and he enthusiastically participates in the activities offered.

"The walker has allowed Liam so much independence... We are grateful to Brainwave for this funding and ongoing support."

Amy, mother of Liam - aged 3



25
YEARS
SUPPORTING
FAMILIES

CELEBRATING
25
YEARS

Brainwave EVENTS

MELBOURNE GALA

Brainwave's annual Melbourne Gala was held at the Atlantic's luxurious Peninsula in August, 2018.

The evening was a huge success with over **370 guests** in attendance. In total, **\$214,844** was **raised** with all funds contributing to Brainwave's ongoing activities.

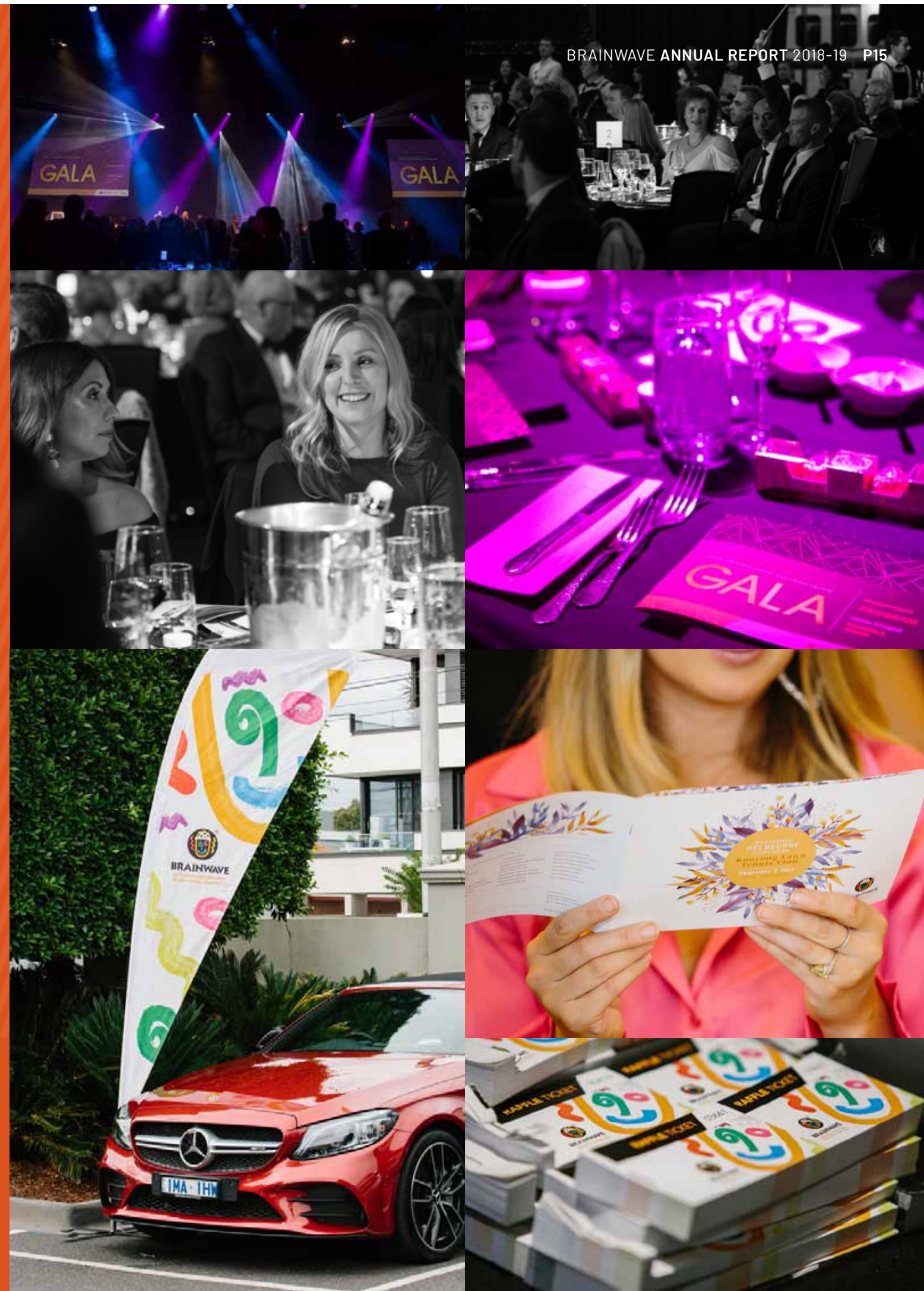
The night would not have been possible without the generous support of our Principal Partner Mercedes-Benz Australia/Pacific and the Mercedes-Benz Dealer Network. We would also like to thank our Major Supporting Partner, The QBE Foundation and our loyal event supporter Ferrero Australia.

MELBOURNE LUNCHEON

In May 2019, Brainwave hosted its Melbourne Luncheon at the Kooyong Lawn Tennis Club.

Over 150 attendees enjoyed a delicious lunch, wonderful entertainment and the opportunity to network. The luncheon was big hit, raising over \$72,700 for Brainwave.

These essential funds will allow us to the continue delivering our much-needed peer support programs, provision of Bear Essential Packs and funding for equipment and therapies.



Our Corporate Partners & Sponsors Supporting Families

In 2018/19 our Corporate Partners and Sponsors generously assisted Brainwave through the funding of programs, donations and direct purchase of equipment. The shared commitment of our partners has been integral to Brainwave's work. These organisations have made a big impact on the lives of many children and their families.



PRINCIPAL PARTNER – MERCEDES-BENZ AUSTRALIA



Mercedes-Benz Australia has supported Brainwave's efforts for over seven years. The Mercedes-Benz Corporate Centre provided a generous partnership grant and their dealers supported our Brainwave families through:

- Fundraising at dealer golf days
- Providing volunteers for events
- Donating proceeds of the sale of Mercedes-Benz merchandise at their support office
- Attending fundraising galas and other events
- Donating auction items for galas

OUR SUPPORTERS

FERRERO

- Fundraised through staff Christmas and Easter product sales
- Hosted Brainwave families at Taronga Zoo as part of the Ferrero Conference and Social Workforce Day
- Provided volunteers for family events
- Provided product for family events, auction items and Bear Essentials packs



- Provided financial assistance for the Bear Essentials Program
- Matched staff fundraising and donations

SMARTWAYS LOGISTICS FOR LIFE

- Smartways distributed Brainwave's Bear Essentials Packs to major paediatric hospitals across Victoria, New South Wales, Tasmania, Western Australia and South Australia
- Provided financial support for the Bear Essentials program

In addition, we would also like to thank the following organisations:

- VIRGIN AUSTRALIA
- BURBERRY
- SEVEN NETWORK
- MADAME FLAVOUR
- MILK & CO
- KIDS IN MOTION
- BLUEPRINT

PHILANTHROPIC TRUSTS

With generous contributions from a range of philanthropic trusts and foundations, Brainwave has been able to deliver services to families and children impacted by brain illness when they need it the most.

In 2018/19 we would like to thank:

- Barr Family Foundation
- Bank of Melbourne
- Boncal Family Foundation
- Whitbart Family
- Westpac Bank

SUPPORTING PARTNER – QBE AND THE QBE FOUNDATION



QBE partnered with Brainwave during 2018/2019 by:

- Hosting Brainwave families at the QBE Foundation Sydney Swans match day at the Sydney Cricket Ground
- Raising funds through the QBE Foundation
- Providing donations through their staff workplace giving initiative

PATRONS

SHAWN COSGROVE
GEORGE GREGAN AM
MICHAEL KLIM OAM
SIR GUSTAV NOSSAL AC, CBE

AMBASSADORS

JASON HODGES
LINDY RAMA-ELLIS



BRAINWAVE
SUPPORTING CHILDREN WITH
NEUROLOGICAL CONDITIONS

Meet Dylan

Dylan was diagnosed with hypotonic cerebral palsy, autism and a hearing impairment at two years old.

DYLAN LOVES BIG OPEN SPACES, TREES AND BEACHES. HE HAS A PASSION FOR TRAINS, PLANES AND DR SEUSS.

DUE TO HIS CEREBRAL PALSY, DYLAN TIRES VERY QUICKLY AND HE REQUIRES A DISABILITY PRAM FOR TRANSPORTATION. HE HAS NO UNDERSTANDING OF ROAD SAFETY SO USING A PRAM IS PARAMOUNT TO HIS SAFETY.

Dylan's family were using the disability pram obtained when he was a preschooler, however, at 8 years of age, Dylan had outgrown his chair. The wait for a new NDIS approved chair was 12 months, and in the interim Dylan's family had to make do without transport. With the assistance of their medical team, the family approached Brainwave to fund a new disability pram for Dylan.



"Funding means we can go out again as a family which means the world to us! We are now able to take Dylan out and about for family bush walks or even just a simple trip to Woollies. From all of our family we would like to say thank you so much for this gift. It has been life changing for everyone, most of all his little sister who so enjoys having big brother Dylan with her on family trips and walks." Zoe, mother of Dylan – aged 8

How to get involved

Brainwave relies on the generosity of its partners, sponsors and supporters.

THERE ARE A VARIETY OF WAYS TO BECOME INVOLVED WITH OUR ORGANISATION AND CONTRIBUTE TO THE IMPORTANT WORK THAT WE UNDERTAKE.

FUNDRAISE FOR BRAINWAVE

Opportunities to engage your community are endless: you might like to hold your own event or participate in an existing fundraiser. Some ideas include hosting a charity morning tea, BBQ or a team challenge. These activities raise valuable funds and increase awareness of our work.

REGULAR DONATIONS

Every donation makes a difference. Our families rely on Brainwave's assistance and all contributions are gratefully received.

Donating is simple, just log on to our website and follow the prompts: www.brainwave.org.au

SPONSOR A FAMILY EVENT

Family camps and activity days provide rewarding experiences for our Brainwave children and their families. By sponsoring an event you can make a lasting impact on the lives of these special people. The events also provide a great opportunity for your friends, family and staff to contribute to a wonderful cause.

CORPORATE PARTNERSHIP

Brainwave have a long and fruitful history with the corporate sector spanning 25 years. We are always on the lookout for new partners who share our values and want to make a difference.

WORKPLACE GIVING

Workplace giving is an effective way to assist Brainwave. Automatic payroll deductions directed to Brainwave help fund our various programs and support packs.

BECOME A BRAINWAVE VOLUNTEER

There are many ways that a volunteer can assist, including helping at family and fundraising events, working at the Brainwave office or joining one of our volunteer committees in Melbourne or Sydney.

PURCHASE A PIECE OF EQUIPMENT OR THERAPY SESSIONS

Many of our Brainwave families struggle to afford necessary items of equipment, therapy sessions, tutoring or educational aids. You can make a direct, immediate impact on the life of a Brainwave child and their family by purchasing vital equipment or funding therapy sessions.

Our Board



TRENT BROOKS, CHAIRMAN

Managing Director, Guardian Medical Pty Ltd

Managing Director and founding shareholder of Guardian Medical Pty Ltd with 20 years' experience in the management of a medical group of companies comprising medical centers, dental practice and property division. Trent also consults to the healthcare industry on the implementation of management systems to medical practitioners and operators as well as consulting on the establishment or expansion of medical facilities and groups.



BERNIE BICKNELL

Partner, NEM Australasia Advisory firm

Bernie Bicknell is an experienced finance professional, having held senior management roles in both Australia and internationally. Bernie currently works as a consultant with NEM Australasia.

He was previously CFO at the Godfreys Group and CEO and CFO of Mitre 10, and CFO for ICI Paints in New Zealand and North America. Bernie was also previously a Director and Chair of The Lighthouse Foundation, a not for profit organisation working with homeless and at-risk young people.

He is a Certified Practicing Accountant (CPA) and a member/graduate of the Australian Institute of Company Directors (GAICD).



DAVID BLACKLEY

Retired Chairman, Clemenger BBDO, Melbourne

David was with the Clemenger Group of marketing communications companies for 36 years, and was a member of the Worldwide Creative Board of BBDO New York, representing BBDO's interests throughout Australia, New Zealand and Asia on that Board.

David has been involved with Brainwave since its inception in 1994 and joined the Board in 2008.



PATRICIA COLLETT OAM

Patricia has spent most of her career in the NGO sector and held the position of Executive Director of the United Nations Association of Australia, Victoria for 17 years. Prior to that time Patricia was a consultant to CEDA, the Committee for Economic Development of Australia.

Patricia has also held numerous voluntary positions during her career in the NFP sector including as Vice President and then President of Alzheimer's Australia, Victoria for a period of ten years and also as the inaugural Vice Chair of the Alzheimer Australia Research Foundation, (Dementia Australia) playing a significant role in the development, from inception, of both organisations, in Victoria and Nationally. She is an honorary life member of the Association.

Patricia has a keen interest and proven skills in developing the potential of organisations in both the NFP and NGO sectors.



PAUL GORDON

Principal and Head, Financial Wellbeing, Aon, Pacific

Co-author, Spenditude, a life changing attitude to money.

Paul joined Aon in 2012 with extensive experience across banking, finance and consulting with corporations such as Deloitte, Lend Lease and St George Bank. Paul's role at Aon is to work with major clients in order to bring them the best of Aon's insights and services.

Paul is an expert at examining issues and providing world class thought leadership and solutions.



NEIL KEARNEY

Chairman, Huon Aquaculture Group Ltd

Neil is Chairman of ASX listed salmon farmer and processor Huon Aquaculture Group Ltd, and of privately owned FGB Natural Products Pty Ltd, a manufacturer of natural eucalyptus, tea tree and lavender based products.

Neil has international senior executive experience in the food and agribusiness industries across a range of functions, including Finance, Marketing, Business Development, Strategy, and International Trading. His career included working for; Goodman Fielder, Warrnambool Cheese & Butter, National Foods, Nestle, Pacific Brands Food Group, Plumrose and Fosters.



KAREN PASSEY

Karen Passey comes to Brainwave with a strong working background in the not-for-profit sector, having been a CEO for close to 20 years, a role which saw her manage a broad range of business aspects from governance, financial accountability, human resources and strategic planning.

With a background in the health sector and local government she has a sound understanding of the needs of our clients and a desire to add value to the work of Brainwave, to ensure its long-term viability and more importantly, availability, to the families that need the organisation's support, now and into the future.



DIANNE RICHARDSON

Director, Principle Media Group

Dianne has held many senior roles in the advertising and marketing industry, including Executive Vice President, Chief Strategy Officer at Universal McCann in New York prior to moving back to Melbourne.

With 20+ years' experience across agency and client side her experience covers multiple categories including, Telco, FMCG, Retail, Automotive, Government, Finance and Insurance. Dianne brings a wealth of knowledge and capability across multiple disciplines including strategy, research, content, digital, data and analytics. She is highly regarded having been recognised in AdNews' "40 under 40" and gained the title of B&T's "Women in media" award in 2014.



JOHN PAUL WHITBREAD

Director

John Paul is a vastly experienced Executive Director and CEO with more than 25 years as an insurance industry leader. He has particular interest in those that use their success to try to solve social problems or effect social change.

He is a Fellow of the Institute of Company Directors, a Fellow of the Australian and New Zealand Institute of Insurance and Finance, and is on the Boards of several organisations, including St. Kevin's College Foundation and St. Kevin's Old Boys Football Club.

John Paul has a strong sense of social justice and, in his philanthropic work, supports a variety of indigenous and education-based charities.

financial review

RESULTS FOR YEAR ENDED 30 JUNE 2019

Each year, Brainwave prepares a full set of accounts which are independently audited by BDO, located at Level 18, 727 Collins Street, Melbourne, Victoria and lodged with the Australian Securities and Investments Commission. Our statutory accounts are available on request from the Brainwave office.

Program and service expenses relate to the cost of delivery of our support services to children and include equipment and therapies, hospital liaison, family care program activities and an interactive website for Brainwave families.

IN 2018/19, DESPITE A CHALLENGING YEAR FINANCIALLY, \$183,228 WAS SPENT ON RECIPIENT FUNDING, COMPARED TO \$214,596 FOR THE PREVIOUS YEAR.

ALLOCATION OF FUNDS RAISED 2018 - 2019

59% Programs & Services

35% Fundraising

(9)% Project Reserves

15% Administration

SUMMARY OF RESULTS FOR YEAR ENDED 30 JUNE 2019

Total revenue
\$744,594

Fundraising expenses
\$261,000

Program and service expenditure
\$441,000

brainwave.org.au

| 2018 | 19

228 St Kilda Road, St Kilda VIC 3182

National: 1300 766 819

Tel: 03 9536 5600

Email: admin@brainwave.org.au



facebook.com/BrainwaveAustralia



@brainwaveaus



@brainwaveaus



BRAINWAVE

SUPPORTING CHILDREN WITH
NEUROLOGICAL CONDITIONS